



# A New Concept for Temporary Wound Closure

## In Military Use

The **TopClosure**<sup>®</sup> System is an important innovative trauma management device that can be applied in combat applications for temporary primary wound closure while complying with basic trauma guidelines.

This new device can be used in battalion First-Aid stations and field hospitals by surgeons, non-surgeon physicians and military medics.

**TopClosure**<sup>®</sup> should be applied as a new methodology for the military Combat Casualty Care (CCC) protocol and be included in Combat Casualty Response Kits.



## In Multi Casualty Disasters





The **TopClosure**<sup>®</sup> system is a novel concept in mass casualty treatment.


While in the past, complex wounds could not be primarily closed and were prone to further contamination and infection, with the **TopClosure**<sup>®</sup> in hand, following basic cleansing of the wound, an adequate temporary, primary wound edges approximation can be provided.

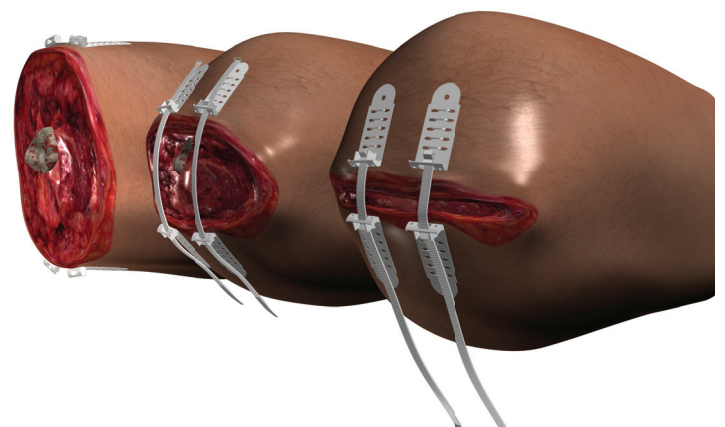
When the victim reaches the hospital, the **TopClosure**<sup>®</sup> can be easily 'zipped'-open for re-evaluation and definite treatment of the injury.

For the preparedness and response to emergencies and disasters, the **TopClosure**<sup>®</sup> System was designed to replace the conventional surgical stitching kits stocked in the emergency storage facilities.

 Reversible closure of complex wounds with significant loss of skin and soft tissue.

 Simple, fast way to manage acute trauma wounds, where conventional primary wound treatment must be deferred.

 Secure wound closure when wounds are closed under tension.

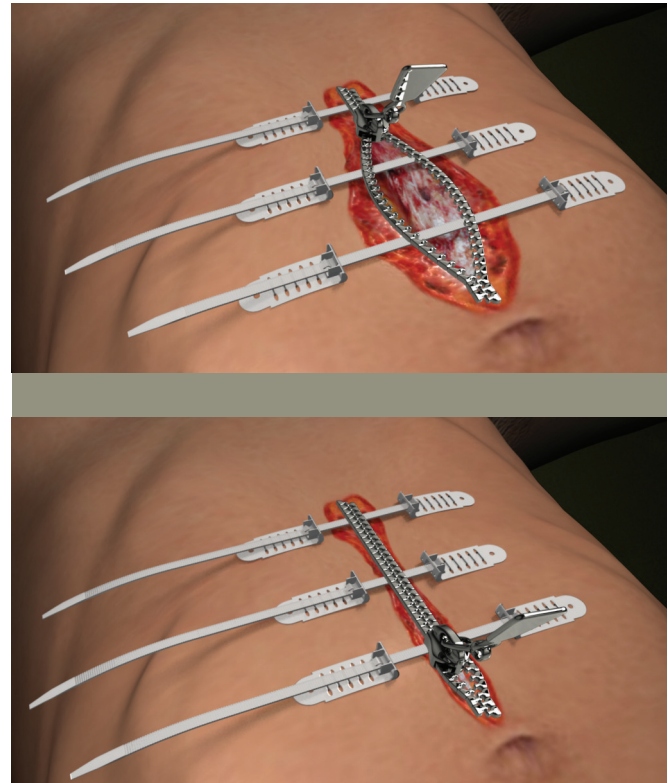




## Simple Solutions for Complex Problems

### The Advantages of the TopClosure® System in Military Applications and Multi Casualty Disasters

- Easy, fast and simple application.
- Adjustable plates and flexible straps, designed to accommodate different body curvatures.
- Compact, lightweight and non-fragile.
- Improves patient mobilization and comfort.
- Reduces wound contamination and infection.
- Short learning curve for physicians and paramedics



### TopClosure® System

Zip to Close, Zip to Open  
Zip - it's Secured!

The TopClosure® product line consists of three size options: 4 mm, 6 mm and 8 mm.

For further information and purchasing, contact us at:

IVT Medical Ltd. | Ra'anana, ISRAEL | +972-9-7463737 | [info@topclosure.com](mailto:info@topclosure.com)

[www.topclosure.com](http://www.topclosure.com)

We thrive for simple solutions for complex problems.